

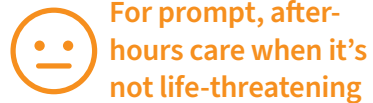
# Where should I go for care?



## Primary Care Doctor

Appointment: Yes  
Hours: Business  
Visits: Video and in-person

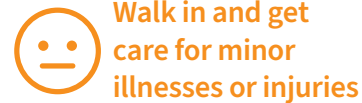
*Annual exams • Routine care, including minor ailments and injuries • Blood tests • Care for chronic illness • Vaccinations*



## Stanford Express Care

Appointment: Yes, same-day  
Hours: Daily, varies by location  
Visits: Video and in-person

*Minor ailments including cold, cough, flu, sore throats, congestion, headaches, fever, ear infections, urinary tract infections and rashes • Minor injuries including sprains, cuts, puncture wounds, burns, animal and insect bites • Vomiting and diarrhea • Back pain • Abdominal pain • Mild asthma*



## Stanford Walk-In Clinic

Appointment: No  
Hours: Monday–Friday,  
2:30pm–10:00pm



## Urgent Care

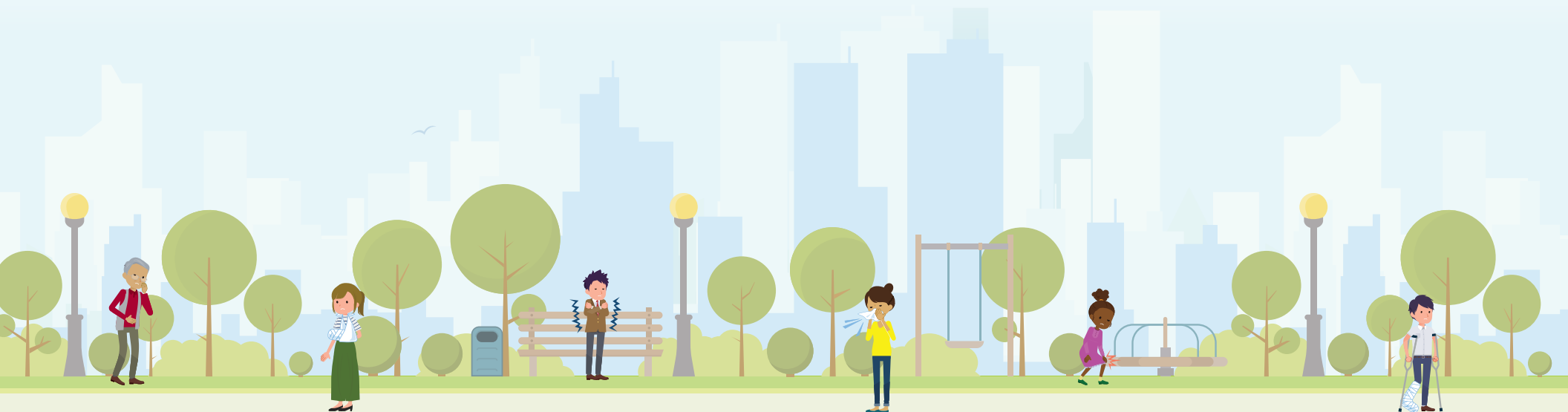
Appointment: Yes, same-day  
Hours: Daily, varies by location  
Visits: Video and in-person



## Emergency Department

Appointment: No  
Hours: 24/7

*Call 911 or go to the nearest hospital for life-threatening emergencies*



## When you are unable to see your primary care doctor, but it's not serious enough for the emergency department



### [Stanford Express Care – Castro Valley >>](#)

20642 John Dr  
Castro Valley, CA 94546  
Phone: 510-785-5000  
Hours: Mon–Fri, 7am–7pm  
Sat–Sun, 9am–7pm

### [Stanford Express Care – Palo Alto >>](#)

211 Quarry Rd, Ste 102  
Palo Alto, CA 94304  
Phone: 650-736-5211  
Hours: Daily, 9am–9pm

### [Stanford Express Care – San Jose >>](#)

52 Skytop St, Ste 10  
San Jose, CA 95134  
Phone: 669-294-8888  
Hours: Daily, 9am–9pm

### [Stanford Medicine Imaging and Express Care >>](#)

798 S Winchester Blvd  
San Jose, CA 95128  
Phone: 408-984-7226  
Hours: Mon–Fri, 8am–8pm  
Sat–Sun, 9am–7pm

### [Stanford Walk-In Clinic >>](#)

211 Quarry Rd, Ste 402  
Palo Alto, CA 94304  
Phone: 650-498-3328  
Hours: Mon–Fri, 2:30pm–10:00pm

### [Stanford Health Care Tri-Valley Urgent Care >>](#)

1133 E Stanley Blvd  
Livermore, CA 94550  
Phone: 925-373-4018  
Hours: Daily, 10am–8pm  
Holidays\*, 10am–3pm

4000 Dublin Blvd, Ste 150  
Dublin, CA 94568  
Phone: 925-479-3773  
Hours: Daily, 10am–8pm  
Holidays\*, 10am–3pm

*\*July 4th, Thanksgiving and Christmas*

### [After Hour Pediatrics Urgent Care >>](#)

210 Baldwin Ave  
San Mateo, CA 94401  
Phone: 650-579-6581  
Hours: Mon–Fri, 5pm–10pm  
Sat–Sun, 10am–10pm

### [O'Connor Pediatric Urgent Care >>](#)

2101 Forest Ave, Ste 130  
San Jose, CA 95128  
Phone: 408-283-7677  
Hours: Mon–Fri, 2pm–9pm

### [Carbon Health Urgent Care Clinics](#)

#### [Alameda – Bridgeside Shopping Center >>](#)

2671 Blanding Ave, Ste A&B  
Alameda, CA 94501  
Phone: 510-694-4816  
Hours: Daily, 9am–7pm

#### [Berkeley – Telegraph Ave >>](#)

2920 Telegraph Ave  
Berkeley, CA 94705  
Phone: 510-686-3621  
Hours: Daily, 9am–7pm

#### [Campbell – S Bascom Ave >>](#)

1760 S Bascom Ave, #140  
Campbell, CA 95008  
Phone: 408-214-9732  
Hours: Daily, 9am–7pm

#### [Mountain View – San Antonio Center >>](#)

2580 W El Camino Real, #6  
Mountain View, CA 94040  
Phone: 650-540-8851  
Hours: Daily, 8:30am–4:30pm

#### [Oakland – Grand Ave >>](#)

411 Grand Ave  
Oakland, CA 94610  
Phone: 510-844-4097  
Hours: Daily, 8am–6pm

#### [San Francisco – Spear St >>](#)

345 Spear St, Ste 120  
San Francisco, CA 94105  
Phone: 415-612-3275  
Hours: Daily, 9am–7pm

#### [San Jose – Almaden Ranch >>](#)

5120 Cherry Ave, #20  
San Jose, CA 95118  
Phone: 408-780-2532  
Hours: Daily, 9am–7pm

#### [San Jose – El Paseo de Saratoga >>](#)

1390 El Paseo de Saratoga, #1390  
San Jose, CA 95130  
Phone: 408-533-0345  
Hours: Mon–Fri, 9am–7pm

#### [San Jose – Market Park >>](#)

1411 Berryessa Rd, Ste 30  
San Jose, CA 95131  
Phone: 408-785-6344  
Hours: Daily, 9am–7pm

#### [San Jose – Santana Row >>](#)

377 Santana Row, #1180  
San Jose, CA 95128  
Phone: 669-247-4773  
Hours: Daily, 9am–7pm

#### [San Mateo – Hillsdale Mall >>](#)

46 Hillsdale Mall  
San Mateo, CA 94403  
Phone: 650-769-5612  
Hours: Daily, 9am–7pm

#### [Santa Clara – Santa Clara Square >>](#)

2712 Augustine Dr, Ste 120  
Santa Clara, CA 95054  
Phone: 408-780-2542  
Hours: Daily, 9am–7pm

#### [More Carbon Health Bay Area locations >>](#)

More in-network urgent care centers and clinics ►  
Member Care Services: **1-855-345-7422**

